

# Hemix 9080

## 3-Part & 5-Part Combined Auto Hematology Analyzer

### 5-Part testing mode

25 reportable parameters and 6 research parameters

3D scattergram for accurate differentiation and pathological sample flag



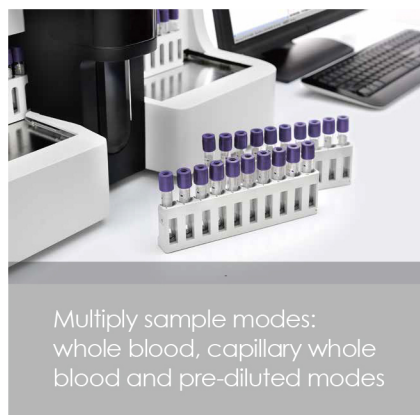
Greatly reduces the test cost

Only two reagents  
21 reportable parameters

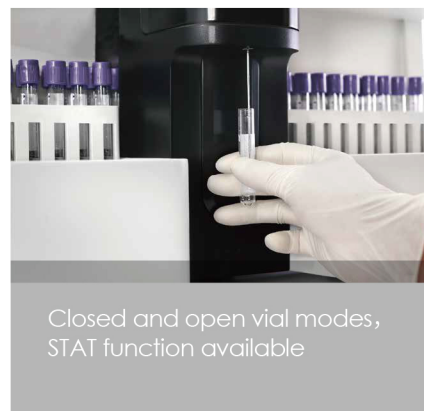
### 3-Part testing mode




Loading up to 60 samples simultaneously and support continuous sample loading



Multiply sample modes:  
whole blood, capillary whole blood and pre-diluted modes

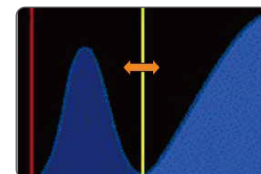


Closed and open vial modes,  
STAT function available

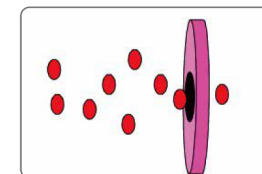
 Ultra-low sample volume especially suited to pediatric and geriatric samples

### Fully Automatic Intelligent Technology

- Visul self-tests (working status self test and reagent volume self-selection)
- Automatic test re-run, with re-run rules inside
- One-button error removal and automatic standby mode function
- Intelligent WBC/RBC /PLT floating threshold technology



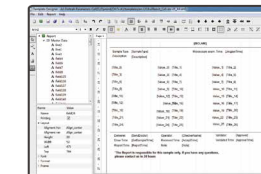
Floating threshold



Detection aperture

### Excellent Data Management System

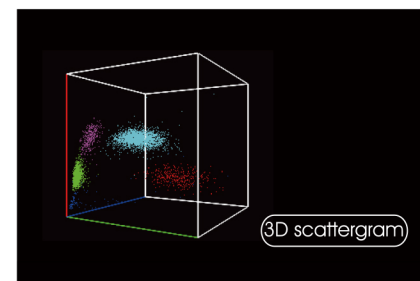
- A wide range of pathological alarms and up to 20 user-defined alarm ranges
- Customized templates print and help to customize the final report according to requirements
- Bi-directional LIS connection
- QC and calibration management



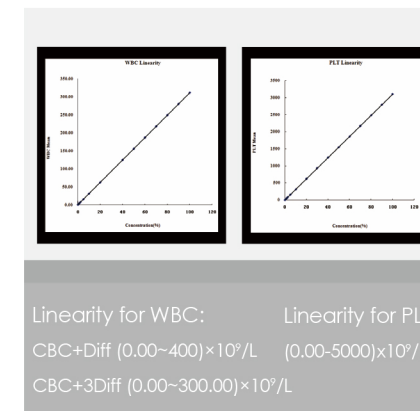
Customized print templates



Internal Barcode scanning



3D scattergram for accurate differentiation and pathological sample flag



Linearity for WBC:  
CBC+Diff (0.00~400)×10<sup>9</sup>/L  
CBC+3Diff (0.00~300.00)×10<sup>9</sup>/L

Linearity for PLT:  
(0.00~5000)×10<sup>9</sup>/L



Only three lyses,  
2 years shelf life